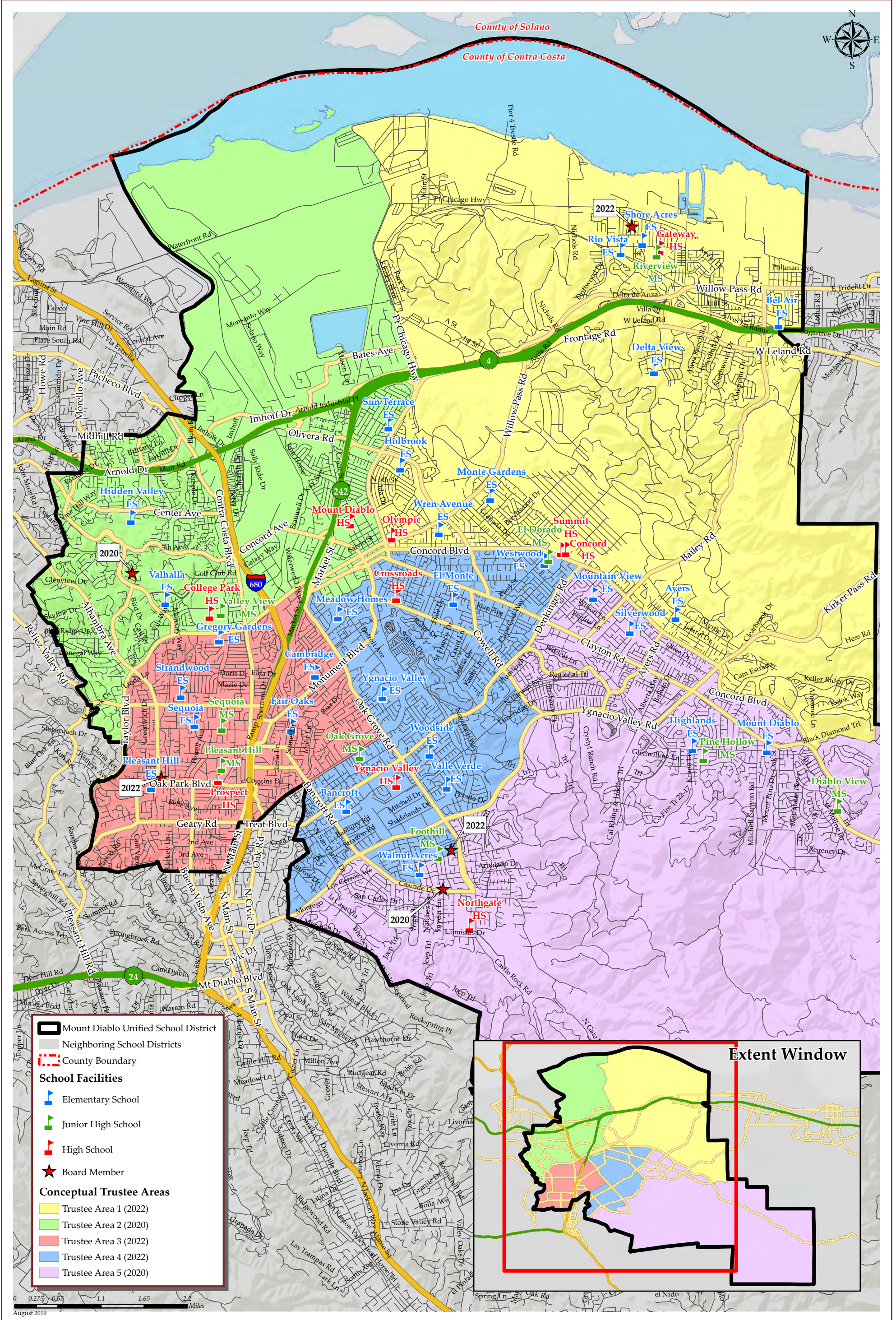


MT DIABLO UNIFIED SCHOOL DISTRICT CONCEPTUAL TRUSTEE AREAS - SCENARIO RED



Legend

- Mount Diablo Unified School District
- Neighboring School Districts
- County Boundary
- School Facilities**
 - Elementary School
 - Junior High School
 - High School
 - Board Member
- Conceptual Trustee Areas**
 - Trustee Area 1 (2022)
 - Trustee Area 2 (2020)
 - Trustee Area 3 (2022)
 - Trustee Area 4 (2022)
 - Trustee Area 5 (2020)

MT DIABLO UNIFIED SCHOOL DISTRICT

CONCEPTUAL TRUSTEE AREAS - SCENARIO RED

Total Population (2010 Census)						
	Trustee Area 1	Trustee Area 2	Trustee Area 3	Trustee Area 4	Trustee Area 5	Variance
Population	51,155	49,403	49,477	50,004	50,332	
Population Variance	1,081	-671	-597	-70	258	
	2.16%	-1.34%	-1.19%	-0.14%	0.51%	3.50%
Hispanic/Latino	17,959	12,085	12,248	12,432	6,566	
	35.11%	24.46%	24.75%	24.86%	13.05%	
White	20,064	27,280	28,585	27,849	33,682	
	39.22%	55.22%	57.77%	55.69%	66.92%	
Black/ African American	3,652	1,694	1,238	1,398	1,035	
	7.14%	3.43%	2.50%	2.80%	2.06%	
American Indian/ Alaska Native	164	167	109	134	135	
	0.32%	0.34%	0.22%	0.27%	0.27%	
Asian	7,037	5,982	5,112	6,021	6,560	
	13.76%	12.11%	10.33%	12.04%	13.03%	
Native Hawaiian/ Other Pacific Islander	331	218	214	228	123	
	0.65%	0.44%	0.43%	0.46%	0.24%	
Other	127	92	107	142	137	
	0.25%	0.19%	0.22%	0.28%	0.27%	
Two or More Races	1,821	1,885	1,864	1,800	2,094	
	3.56%	3.82%	3.77%	3.60%	4.16%	

Population 18 and Over (2010 Census)						
	Trustee Area 1	Trustee Area 2	Trustee Area 3	Trustee Area 4	Trustee Area 5	
Population	37,767	39,218	38,682	39,032	38,972	
Population Variance	-967	484	-52	298	238	
	-2.50%	1.25%	-0.13%	0.77%	0.61%	
Hispanic/Latino	11,503	8,177	8,247	8,270	4,523	
	30.46%	20.85%	21.32%	21.19%	11.61%	
White	16,585	23,179	23,812	23,404	27,024	
	43.91%	59.10%	61.56%	59.96%	69.34%	
Black/ African American	2,597	1,277	959	1,083	806	
	6.88%	3.26%	2.48%	2.77%	2.07%	
American Indian/ Alaska Native	133	146	97	108	100	
	0.35%	0.37%	0.25%	0.28%	0.26%	
Asian	5,593	5,100	4,311	4,875	5,290	
	14.81%	13.00%	11.14%	12.49%	13.57%	
Native Hawaiian/ Other Pacific Islander	244	158	152	162	94	
	0.65%	0.40%	0.39%	0.42%	0.24%	
Other	90	68	68	89	90	
	0.24%	0.17%	0.18%	0.23%	0.23%	
Two or More Races	1,022	1,113	1,036	1,041	1,045	
	2.71%	2.84%	2.68%	2.67%	2.68%	

Citizens by Voting Age Population Estimate (2013-2017)						
	Trustee Area 1	Trustee Area 2	Trustee Area 3	Trustee Area 4	Trustee Area 5	
Population	36,353	35,860	34,666	35,858	39,023	
Population Variance	1	-492	-1,686	-494	2,671	
	0.00%	-1.35%	-4.64%	-1.36%	7.35%	
Hispanic/Latino	8,857	6,398	4,523	5,604	4,387	
	24.36%	17.84%	13.05%	15.63%	11.24%	
White	16,820	22,568	23,696	22,729	27,893	
	46.27%	62.93%	68.36%	63.39%	71.48%	
Black/ African American	3,061	1,438	1,193	1,546	1,022	
	8.42%	4.01%	3.44%	4.31%	2.62%	
American Indian/ Alaska Native	178	66	48	24	148	
	0.49%	0.18%	0.14%	0.07%	0.38%	
Asian	5,868	3,705	3,624	4,674	4,368	
	16.14%	10.33%	10.45%	13.03%	11.19%	
Native Hawaiian/ Other Pacific Islander	355	45	226	30	70	
	0.98%	0.13%	0.65%	0.08%	0.18%	
Other	0	0	0	0	0	
	0.00%	0.00%	0.00%	0.00%	0.00%	
Two or More Races	1,214	1,640	1,356	1,251	1,135	
	3.34%	4.57%	3.91%	3.49%	2.91%	